

Feelgood designs

Create a feelgood environment.



Catalogue Europe • September 2023

‘We create furniture that makes people feel good,
because we believe when people feel good, they work, relax and live better.’

An Australian company

Feelgood Designs was established in 2001 in Melbourne, Australia. With a focus on natural materials, innovative design and quality, our furniture helps to create warm, human-oriented ‘feelgood’ environments. Through collaborations with selected designers we endeavour to provide enduring furniture solutions that combine the best of traditional craftsmanship with modern day manufacturing and high quality materials.

What goes into making a piece of furniture feel good?

It's the carefully selected materials that feel good to touch and add warmth to a room.

It's the meticulous craftsmanship and attention to every detail that entices you to run your hand along a beautifully crafted surface.

It's the enduring quality of our designs that ensures they remain contemporary for decades to come.

Why we love rattan...

Ideal for use in furniture, rattan naturally embodies many of the properties high tech materials try to emulate. Its high strength and flexibility enables the formation of organic shapes that mould to the user's body. Rattan's excellent breathability and low thermal conductivity improve user comfort and help the body to maintain a constant temperature.

Our handwoven production process consumes minimal energy, provides employment to struggling communities and helps to keep this traditional craft alive.

Rattan is a biodegradable, renewable resource. When managed sustainably rattan leaves a small environmental footprint.

marta b.v. is the exclusive importer and agent for Feelgood Desglns in Europe since 2013, serving the professional market, with offices in Belgium and the Netherlands.

Rattan in general

Also known as ‘wicker’ rattan is a climbing palm with over 600 species that grows in tropical regions of Asia and Africa. Rattan is a rapidly renewable resource that is 100% biodegradable. Its fast, climbing growth habit and potential as a Non Timber Forest Product (NTFP) can encourage sustainable forest practices that protect existing vegetation. Rattan harvesting and associated industries providing employment and positive social welfare benefits to local communities. The material natural exhibits many of the qualities that are desirable for furniture manufacturing. It is thermally stable, strong and its flexibility allows it to be woven into organic shapes that mould to the user's body. Products made from rattan consume considerably less energy and emit less greenhouse gasses compared to similar products made with synthetic materials.



Rattan poles

A common term used to describe various species of larger diameter rattan. Sizes range from 8mm to 40mm in diameter. Pale blond in colour with uniform diameter and texture.

This material will develop a honey patina over time with exposure to light.
Suitable for indoor use only.



Rattan core (split rattan)

3mm round weaving material processed from the centre (core) of larger rattan poles. Pale blond in colour with uniform diameter and texture.

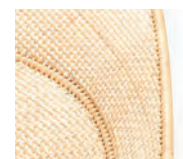
This material will develop a honey patina over time with exposure to light.
Suitable for indoor use only.



Rattan slimit / Rattan pulut

An unprocessed rattan species with hard outer skin. 3 to 4mm in diameter, the colour naturally varies from pale oak to tan.

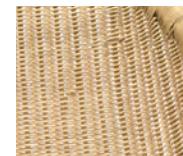
With an outer protective skin this species is one of the most resilient weaving materials available.
Suitable for indoor use only.



Rattan peel

5mm in width, flat weaving material made from the outer skin of rattan poles. Pale blond in colour with uniform width.

This material will develop a honey patina over time with exposure to light.
Suitable for indoor use only.



Polyethylene core

3mm round synthetic rattan made from polyethylene (PE).

Although polyethylene contains UV stabilisers some fading will still occur with prolonged outdoor use.
Suitable for both indoor and outdoor use or applications with a high incidence of spills.
Polyethylene material can be recycled. Suitable for outdoor use.



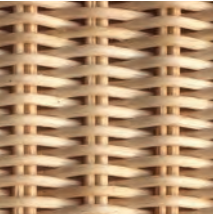
Polyethylene peel

5mm flat half oval shaped synthetic peel made from polyethylene (PE).

Although polyethylene contains UV stabilisers some fading will still occur with prolonged outdoor use.
Suitable for both indoor and outdoor use or applications with high incidence of spills.
Polyethylene material can be recycled. Suitable for outdoor use.

INDOOR • material and colors

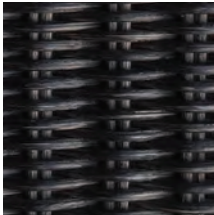
Rattan core (split rattan)



natural



charcoal



black

Rattan pulut



natural



graphite

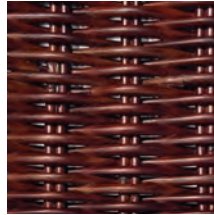
Rattan slimit



natural



graphite



rust

Rattan peel



natural



espresso

Rattan pole



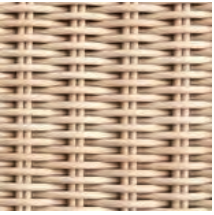
natural



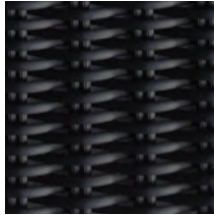
black

OUTDOOR • material and colors

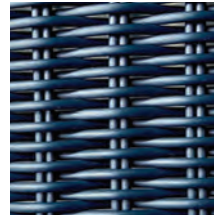
Polyethylene core



wheat



black



charcoal

Polyethylene peel



espresso

WOOD • material and colors

Oak solid & veneer



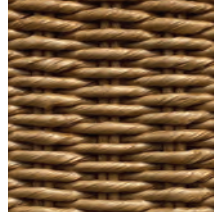
natural



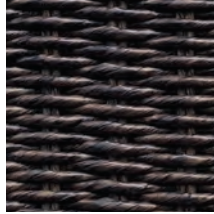
black

LOOM • material and colors

Twisted Kraft paper on steel wire



natural



charcoal

Maintenance & care of rattan

Maintenance

- Occasionally clean chairs with a soft lint free cloth or duster.
- Spills can be removed with a damp soft sponge or lint free cloth that has been soaked in warm water.
- Do not use excessive amounts of water and ensure rattan is dry before re-use.
- Do not use scourers or harsh detergents as these may damage the coatings.
- Check and replace plastic feet if necessary.

Care

- Do not stand on chairs.
- Do not place any heavy or sharp objects on chairs.
- Do not knock or rub chairs against walls, tables or surfaces that may damage the weaving.
- Do not place wet objects on indoor items.
- Do not use rattan chairs outdoors or in damp, wet area's such as bathrooms.
- Stacking chairs should be stacked with care to avoid damage.

The Feelgood Designs collection • September 2023

New item September 2023



Dimensions (mm): W590 x D570 x H815 (SH 455 | AH 650)

Materials: powder coated frame with polyethylene shell

Colours: charcoal frame with polyethylene wheat or charcoal* (outdoor)

Outdoor use: yes

Stacking: yes

*on request



Elliot armchair by Allan Nøddebo (2020)

New item January 2023



Feelgood designs

Dimensions (mm): W585 x D550 x H790 (SH 450)

Materials: powder coated frame with peel rattan PU finished shell

Colours: charcoal frame with peel rattan natural

Outdoor use: no

Stacking: no



Gorm armchair by Allan Nøddebo (2022)

New item January 2023

Feelgood designs



Dimensions (mm): W575 x D585 x H790 (SH 450)

Materials: powder coated frame with polyethylene shell

Colours:

charcoal frame with polyethylene wheat (outdoor)
charcoal frame with polyethylene charcoal (outdoor)

Outdoor use: yes

Stacking: yes



Alvin chair by Allan Nøddebo (2020)

Edwin lounge chair charcoal / polyethylene black shell
photography by PSGstudio.be



Feelgood designs

Dimensions (mm): W715 x D695 x H725 (SH 420)

Materials: powder coated frame with split rattan PU finished shell or polyethylene shell

Colours:
charcoal frame with split rattan natural
charcoal frame with split rattan black

charcoal frame with polyethylene wheat (outdoor)
charcoal frame with polyethylene charcoal (outdoor)

Outdoor use: polyethylene version

Stacking: yes



Edwin lounge chair by Allan Nøddebo (2020)

Edwin stacking chair charcoal / polyethylene black shell
photography by PSGstudio.be



Feelgood designs

Dimensions (mm): W580 x D580 x H810 (SH 460)

Materials: powder coated frame with split rattan PU finished shell or polyethylene shell

Colours:
charcoal frame with split rattan natural
charcoal frame with split rattan black

charcoal frame with polyethylene wheat (outdoor)
charcoal frame with polyethylene charcoal (outdoor)

Outdoor use: polyethylene version

Stacking: yes



Edwin stacking chair by Allan Nøddebo (2020)

Ellie chair charcoal frame/slimit rattan natural shell
photography by PSGstudio.be



Feelgood designs

Dimensions (mm): W470 x D530 x H790 (SH 455)

Materials: powder coated frame with slimit rattan PU finished shell

Colours:
charcoal frame with slimit rattan natural
charcoal frame with slimit rattan graphite

Outdoor use: no

Stacking: yes



Ellie by Allan Nøddebo (2020)

Edwin chair charcoal frame/split rattan natural shell

photography by The Fresh Light



Feelgood designs

Dimensions (mm): W510 x D570 x H820 (SH 450)

Materials: powder coated frame with split rattan PU finished shell

Colours:

charcoal frame with split rattan natural
charcoal frame with split rattan black

Outdoor use: no

Stacking: no



Edwin chair by Allan Nøddebo (2019)

Basket chair black frame/slimit natural shell at Inge table natural
photography by PSGstudio.be



Feelgood designs

Dimensions (mm): W530 x D540 x H830 (SH 440)

Materials: powder coated frame with pulut rattan PU finished shell or polyethylene shell

Colours:

black or white frame with pulut rattan natural
black frame with slimit rattan natural
black frame with pulut rattan graphite

black or white frame with polyethylene wheat (outdoor)
black frame with polyethylene black (outdoor)

Outdoor use: polyethylene version

Stacking: stackable up to 8 units



BASKET CHAIR by Gian Franco Legler (1951)

C603 chair black frame/polyethylene wheat shell

photography by René Kemps



Feelgood designs

Dimensions (mm): W520 x D550 x H760 (SH 450)

Materials: powder coated frame with split or pulut rattan PU finished shell or polyethylene shell

Colours:

black frame with split rattan natural
black frame with split rattan charcoal
black or white frame with pulut rattan natural
black frame with pulut rattan graphite
black frame with slimit ratan natural

black or white frame with polyethylene wheat (outdoor)
black frame with polyethylene black (outdoor)

Outdoor use: polyethylene version

Stacking: stackable up to 4 units



C603 by Yuzuru Yamakawa (1958)

C603 stool black frame/split rattan charcoal shell

photography by fotostudio.be



Feelgood designs

Dimensions (mm): W520 x D480 x H940 (SH 660)
or W530 x D500 x H1030 (SH 750)

Materials: powder coated frame with split or pulut rattan PU finished shell or polyethylene shell

Colours:

black frame with split rattan natural
black frame with split rattan charcoal
black frame with pulut rattan natural
black frame with slimit rattan natural
black frame with pulut rattan graphite

black frame with polyethylene wheat (outdoor)
black frame with polyethylene black (outdoor)

Outdoor use: polyethylene version

Stacking: no



C603 STOOL by Yuzuru Yamakawa (1958)

C607 chair black frame/split rattan charcoal shell



Feelgood designs

Dimensions (mm): W520 x D535 x H805 (SH 440)

Materials: powder coated frame with split rattan PU finished shell

Colours:

black frame with split rattan natural
black frame with split rattan charcoal

Stacking: stackable up to 6 units



C607 by Yuzuru Yamakawa (1964)

C607 stool black frame/split rattan natural shell

photography by fotostudio.be



Feelgood designs

Dimensions (mm): W510 x D465 x H890 (SH 660) or
W510 x D465 x H980 (SH 750)

Materials: powder coated frame with split rattan PU finished shell

Colours:

black frame with split rattan natural
black frame with split rattan charcoal
black frame with split rattan maroon

Stacking: no



C607 STOOL by Yuzuru Yamakawa (1964)

Kaki chair charcoal frame/polyethylene charcoal shell & marta; outdoor cushions
photography by PSGstudio.be



Feelgood designs

Dimensions (mm): W590 x D530 x H770 (SH 450)

Materials: powder coated frame with slimit rattan PU finished shell or polyethylene shell

Colours:

charcoal frame with slimit rattan natural
charcoal frame with slimit rattan graphite
charcoal frame with slimit rattan rust

charcoal frame with polyethylene wheat (outdoor)
charcoal frame with polyethylene charcoal (outdoor)

Outdoor use: polyethylene version

Stacking: stackable up to 4 units



KAKI CHAIR by Jamie McLellan (2018)

Kaki armchair charcoal frame/polyethylene wheat shell & marta; outdoor cushions
photography by PSGstudio.be



Feelgood designs

Dimensions (mm): W640 x D520 x H770 (SH 450)

Materials: powder coated frame with slimit rattan PU finished shell or polyethylene shell

Colours:
charcoal frame with slimit rattan natural
charcoal frame with slimit rattan graphite
charcoal frame with slimit rattan rust

charcoal frame with polyethylene wheat (outdoor)
charcoal frame with polyethylene charcoal (outdoor)

Outdoor use: polyethylene version

Stacking: stackable up to 4 units



KAKI ARMCHAIR by Jamie McLellan (2018)

Kaki stool charcoal frame/slimit rattan natural shell
@connors_and_co & @francoisebaudet



Feelgood designs

Dimensions (mm): W590 x D500 x H850 (SH 640)

Materials: powder coated frame with slimit rattan PU finished

Colours:
charcoal frame with slimit rattan natural
charcoal frame with slimit rattan graphite
charcoal frame with slimit rattan rust

Outdoor use: no

Stacking: no



KAKI STOOL WITH BACKREST by Jamie McLellan (2018)

Kakī low stool charcoal frame/polyethylene wheat shell
photography PSGstudio.be



Feelgood designs

- Dimensions (mm):** W490 x D400 x H450 (SH 450)
- Materials:** powder coated frame with slimit rattan PU finished shell or polyethylene shell
- Colours:**
charcoal frame with slimit rattan natural
charcoal frame with slimit rattan graphite
charcoal frame with slimit rattan rust
- charcoal frame with polyethylene wheat (outdoor)
charcoal frame with polyethylene charcoal (outdoor)
- Outdoor use:** polyethylene version
- Stacking:** stackable up to 2 units



KAKĪ LOW STOOL by Jamie McLellan (2018)

Kaki lounge chair/polyethylene charcoal shell & marta; seat cushion
photography by PSGstudio.be



Feelgood designs

Dimensions (mm): W670 x D640 x H710 (SH 400)

Materials: powder coated frame with slimit rattan PU finished shell or polyethylene shell

Colours:
charcoal frame with slimit rattan natural
charcoal frame with slimit rattan graphite
charcoal frame with slimit rattan rust

charcoal frame with polyethylene wheat (outdoor)
charcoal frame with polyethylene charcoal (outdoor)

Outdoor use: polyethylene version

Stacking: stackable up to 4 units



KAKI LOUNGE CHAIR by Jamie McLellan (2018)

C317 lounge chair black frame/polyethylene wheat shell

photography by PSGstudio.be



Feelgood designs

Dimensions (mm): W830 x D760 x H760 (SH 410)

Materials: powder coated frame with split rattan PU finished shell or polyethylene shell

Colours:

black or white frame with split rattan natural
black frame with split rattan charcoal

black or white frame with polyethylene wheat (outdoor)
black frame with polyethylene black (outdoor)

Outdoor use: polyethylene version

Stacking: no



C317 by Yuzuru Yamakawa (1965)



Dimensions (mm): W730 x D885 x H965 (SH 390);
ottoman: W640 x D570 x H530 (SH 380)

Materials: pole rattan PU finished

Colours: natural or black

Outdoor use: no

Stacking: no



C110 HIGHBACK by Yuzuru Yamakawa (1964)

CL320 Easy Chair black pole rattan
photography by gafas.be | styling by sophiepillen.be



Feelgood designs

Dimensions (mm): W850 x D760 x H710 (SH 360)

Materials: pole rattan PU finished

Colours: natural or black

Outdoor use: no

Stacking: no



CL320 EASY CHAIR by Yuzuru Yamakawa

Snug slimit rattan natural
photography by gafas.be | styling by sophiepillen.be



Feelgood designs

Dimensions (mm): W1040 x D890 x H850 (SH 315)

Materials: steel frame with slimit rattan PU finished shell

Colours: slimit rattan natural or graphite

Outdoor use: no

Stacking: no



SNUG by Dennis Abalos (2011)

Manta lounge chair black polyethylene/dark grey seat
photography by gafas.be | styling sophiepillen.be

Feelgood designs



Dimensions (mm): W980 x D890 x H835 (SH 380)

Materials: steel frame with split rattan PU finished shell or polyethylene shell and upholstered seat

Colours:
split rattan natural with beige seat
split rattan charcoal with black seat
black polyethylene with dark grey seat (outdoor)

Outdoor use: polyethylene version

Stacking: no



MANTA by Henrik Pedersen (2011)

Tornaux lounge black frame/polyethylene peel espresso

photography by marta;



Feelgood designs

Dimensions (mm): W860 x D900 x H1004 (SH 360)

Footstool: W610 x D470 x H400 (SH 360)

Materials: powder coated frame with rattan peel PU finished shell or polyethylene shell

Colours:

black frame with peel rattan natural
black frame with peel rattan espresso

black frame with polyethylene espresso (outdoor)

Outdoor use: polyethylene version

Stacking: no



TORNAUX & FOOTSTOOL by Henrik Pedersen (2011)

Clara bench charcoal frame/slimit rattan graphite shell

photography by PSGstudio.be



Feelgood designs

Dimensions (mm): W1330 x D640 x H800 (SH 450)

Materials: powder coated frame with rattan slimit PU finished shell

Colours:
charcoal frame with slimit rattan natural
charcoal frame with slimit rattan graphite

Outdoor use: no

Stacking: no



CLARA by Allan Nøddebo (2018)

Inge table black & Ellie chair charcoal frame/slimit rattan graphite shell

photography by PSGstudio.be



Feelgood designs

Dimensions (mm): diameter 1200 x H750 (base diameter 470)

Materials: American oak veneer with two pack water based finish

Colours: natural or black

Outdoor use: no

Stacking: no



INGE TABLE by Allan Nøddebo (2019)

Trestle Table black top/natural feet & C603 chairs black frame/split rattan natural shell

photography by gafas.be | styling by sophiepillen.be



Feelgood designs

Dimensions (mm):

D1800 x W900 x H730

D2100 x W950 x H730

D2400 x W1000 x H730

Materials: american oak frame and american oak veneer top (reinforced with steel), 2 pack waterbased finish

Colours: top and legs natural or black

Outdoor use: no



TRESTLE TABLE by Allan Nøddebo (2012)

Urban loom chair natural
Tahini Melbourne (Australia) by Zwei Projects
photography by Michael Kai



Dimensions (mm): W497 x D530 x H750 (SH 450)

Materials: unfinished teak frame with loom woven PU finished seat

Colours: natural or charcoal

Outdoor use: no

Stacking: no

Feelgood designs



URBAN LOOM CHAIR by Jakob Berg (2005)

Urban chairs at Urban table S
photography by PSGstudio.be



Feelgood designs

- Dimensions (mm):** W497 x D530 x H750 (SH450)
- Materials:** teak unfinished
- Colours:** natural
- Outdoor use:** yes
- Stacking:** stackable up to 4 units



URBAN CHAIR by Jakob Berg (2005)

Two Urban tables M+L & C603 chair white frame/polyethylene wheat shell
photography by PSGstudio.be



Dimensions (mm):

XS: W695 x D695 x H740
S: W1400 x D800 x H740
M: W1800 x D900 x H740
L: W2100 x D900 x H740
XL: W2600 x D100 x H740

Materials: teak unfinished

Colours: natural

Outdoor use: yes

Table comes flat packed



URBAN TABLE by Jakob Berg (2005)

SEAT CUSHIONS

tailor made indoor and outdoor seat cushions for Basket chair • C603 chair & stool • Ellie chair • C607 chair & stool • C317 lounge chair • Kaki chair & armchair, stool & lounge chair • Clara bench • Edwin chair, stacking chair & lounge chair • Alvin chair

INDOOR



- 100% wool felt
- two layers with filling
- bottom standard anthracite anti-slip
- color top to be chosen



scanning this QR-code will bring you to the colorard

OUTDOOR



- Sunbrella® textiles
- water-repellent
- resistant to fading & degradation from sunlight
- quick dry filling
- bottom anti-slip and zipper
- washable



scanning this QR-code will bring you to the Sunbrella brochure

objects by marta;

T'ALPH table

by Philippe Allaey

A table for two !

The **T'ALPH table** brief: design a table for two that meets the demands of clients in the hospitality industry – beauty, functionality and tough enough to stand intensive use in reception areas. Above all, not square and no sharp corners.

That's where Belgian architect and designer **Philippe Allaey** came in. He was selected by the **marta;** team due to his comprehensive knowledge of the industry and his unequivocal talent as a designer.

He designed a table with light, fluid lines, its top an organic form resting on a central leg, descending to a baseplate that echoes the top with a slight asymmetry.

Presenting the **T'ALPH table** for two !

An exclusive design in a two-seat version and a low table version for a cosy low-dining experience.



Two heights

bistrot *for two* • w580 x d780 x h730

low dining *for two* • w580 x d780 x h630

Two finishes

top: **walnut veneer** on mtx birch or birch veneer on mtx birch

leg: solid walnut or solid birch

base: powdercoated steel in black (standard) or color to be chosen

marta;

www.martaonline.eu

info@martaonline.eu

+31 6430 30 426 • +32 475 204 023



< **T'ALPH table *bistrot*** >
with Ellie chair natural
of Feelgood Designs

T'ALPH table *low dining* >
with Kaki lounge chair rust
of Feelgood Designs





marta;

marta b.v. - import & agency
contact: info@martaonline.eu
www.martaonline.eu
+32 475 294 023 or +31 6 430 30 426