

# Feelgood designs

Create a feelgood environment.



**Catalogue Europe 2022**

‘We create furniture that makes people feel good,  
because we believe when people feel good, they work, relax and live better.’

## An Australian company

Feelgood Designs was established in 2001 in Melbourne, Australia. With a focus on natural materials, innovative design and quality, our furniture helps to create warm, human-oriented ‘feelgood’ environments. Through collaborations with selected designers we endeavour to provide enduring furniture solutions that combine the best of traditional craftsmanship with modern day manufacturing and high quality materials.

## What goes into making a piece of furniture feel good?

It's the carefully selected materials that feel good to touch and add warmth to a room.

It's the meticulous craftsmanship and attention to every detail that entices you to run your hand along a beautifully crafted surface.

It's the enduring quality of our designs that ensures they remain contemporary for decades to come.

## Why we love rattan...

Ideal for use in furniture, rattan naturally embodies many of the properties high tech materials try to emulate. Its high strength and flexibility enables the formation of organic shapes that mould to the user's body. Rattan's excellent breathability and low thermal conductivity improve user comfort and help the body to maintain a constant temperature.

Our handwoven production process consumes minimal energy, provides employment to struggling communities and helps to keep this traditional craft alive.

Rattan is a biodegradable, renewable resource. When managed sustainably rattan leaves a small environmental footprint.

marta b.v. is the exclusive importer and agent for Feelgood Desglns in Europe since 2013, serving the professional market, with offices in Belgium and the Netherlands.

## Rattan in general

Also known as ‘wicker’ rattan is a climbing palm with over 600 species that grows in tropical regions of Asia and Africa. Rattan is a rapidly renewable resource that is 100% biodegradable. Its fast, climbing growth habit and potential as a Non Timber Forest Product (NTFP) can encourage sustainable forest practices that protect existing vegetation. Rattan harvesting and associated industries providing employment and positive social welfare benefits to local communities. The material natural exhibits many of the qualities that are desirable for furniture manufacturing. It is thermally stable, strong and its flexibility allows it to be woven into organic shapes that mould to the user's body. Products made from rattan consume considerably less energy and emit less greenhouse gasses compared to similar products made with synthetic materials.



### Rattan poles

A common term used to describe various species of larger diameter rattan. Sizes range from 8mm to 40mm in diameter. Pale blond in colour with uniform diameter and texture.

This material will develop a honey patina over time with exposure to light.

Suitable for indoor use only.



### Rattan core (split rattan)

3mm round weaving material processed from the centre (core) of larger rattan poles. Pale blond in colour with uniform diameter and texture.

This material will develop a honey patina over time with exposure to light.

Suitable for indoor use only.



### Rattan slimit / Rattan pulut

An unprocessed rattan species with hard outer skin. 3 to 4mm in diameter, the colour naturally varies from pale oak to tan.

With an outer protective skin this species is one of the most resilient weaving materials available.

Suitable for indoor use only.



### Rattan peel

5mm in width, flat weaving material made from the outer skin of rattan poles. Pale blond in colour with uniform width.

This material will develop a honey patina over time with exposure to light.

Suitable for indoor use only.



### Polyethylene core

3mm round synthetic rattan made from polyethylene (PE).

Although polyethylene contains UV stabilisers some fading will still occur with prolonged outdoor use.

Suitable for both indoor and outdoor use or applications with a high incidence of spills.

Polyethylene material can be recycled. Suitable for outdoor use.



### Polyethylene peel

5mm flat half oval shaped synthetic peel made from polyethylene (PE).

Although polyethylene contains UV stabilisers some fading will still occur with prolonged outdoor use.

Suitable for both indoor and outdoor use or applications with high incidence of spills.

Polyethylene material can be recycled. Suitable for outdoor use.

INDOOR • material and colors

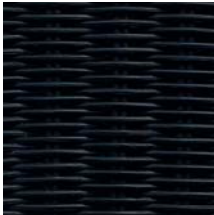
Rattan core (split rattan)



natural



charcoal

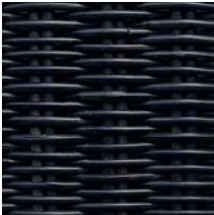


black

Rattan pulut

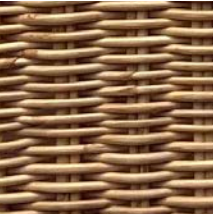


natural

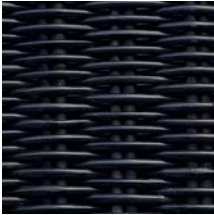


graphite

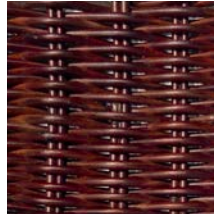
Rattan slimit



natural



graphite

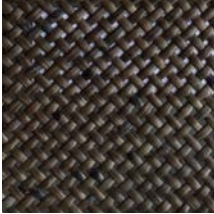


rust

Rattan peel



natural



espresso

Rattan pole



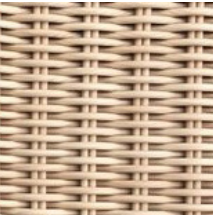
natural



black

OUTDOOR • material and colors

Polyethylene core



wheat



black



charcoal

Polyethylene peel



espresso

WOOD • material and colors

Oak solid & veneer



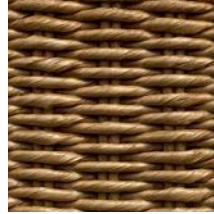
natural



black

LOOM • material and colors

Twisted Kraft paper on steel wire



natural



charcoal

## Maintenance & care of rattan

### Maintenance

- Occasionally clean chairs with a soft lint free cloth or duster.
- Spills can be removed with a damp soft sponge or lint free cloth that has been soaked in warm water.
- Do not use excessive amounts of water and ensure rattan is dry before re-use.
- Do not use scourers or harsh detergents as these may damage the coatings.
- Check and replace plastic feet if necessary.

### Care

- Do not stand on chairs.
- Do not place any heavy or sharp objects on chairs.
- Do not knock or rub chairs against walls, tables or surfaces that may damage the weaving.
- Do not place wet objects on indoor items.
- Do not use rattan chairs outdoors or in damp, wet area's such as bathrooms.
- Stacking chairs should be stacked with care to avoid damage.

**The Feelgood Designs collection 2022**



Edwin lounge chair charcoal / polythylene black shell  
photography by PSGstudio.be

New item 2022

Feelgood designs



**Dimensions (mm):** W715 x D695 x H725 (SH 420)

**Materials:** powder coated frame with split rattan PU finished shell or polyethylene shell

**Colours:**  
charcoal frame with split rattan natural  
charcoal frame with split rattan black

charcoal frame with polyethylene wheat (outdoor)  
charcoal frame with polyethylene black (outdoor)

**Outdoor use:** polyethylene version

**Stacking:** yes



Edwin lounge chair by Allan Nøddebo (2020)



Edwin stacking chair charcoal / polyethylene black shell  
photography by PSGstudio.be

New item 2022

Feelgood designs



**Dimensions (mm):** W580 x D580 x H810 (SH 460)

**Materials:** powder coated frame with split rattan PU finished shell or polyethylene shell

**Colours:**  
charcoal frame with split natural rattan  
charcoal frame with split black rattan

charcoal frame with polyethylene wheat (outdoor)  
charcoal frame with polyethylene black (outdoor)

**Outdoor use:** polyethylene version

**Stacking:** yes



Edwin stacking chair by Allan Nøddebo (2020)

Ellie chair charcoal frame/slimit rattan natural shell  
photography by PSGstudio.be

Feelgood designs



**Dimensions (mm):** W470 x D530 x H790 (SH 455)

---

**Materials:** powder coated frame with slimit rattan PU finished shell

---

**Colours:**  
charcoal frame with rattan slimit natural  
charcoal frame with rattan slimit graphite

---

**Outdoor use:** no

---

**Stacking:** yes



Ellie by Allan Nøddebo (2020)



Edwin chair charcoal frame/split rattan natural shell

photography by The Fresh Light

**Feelgood** designs



**Dimensions (mm):** W510 x D570 x H820 (SH 450)

**Materials:** powder coated frame with split rattan PU finished shell

**Colours:**

charcoal frame with split rattan natural  
charcoal frame with split rattan black

**Outdoor use:** no

**Stacking:** no



**Edwin chair** by Allan Nøddebo (2019)



Basket chair white frame/slimit natural shell  
photography by PSBstudio.be



**Dimensions (mm):** W530 x D540 x H830 (SH 440)

**Materials:** powder coated frame with pulut rattan PU finished shell or polyethylene shell

**Colours:**

black or white frame with rattan pulut natural  
black frame with slimit rattan natural  
black frame with rattan pulut dark grey

black or white frame with polyethylene wheat (outdoor)  
black frame with polyethylene black (outdoor)

**Outdoor use:** polyethylene version

**Stacking:** stackable up to 8 units



**BASKET CHAIR** by Gian Franco Legler (1951)

**Feelgood** designs

C603 chair black frame/polyethylene wheat shell

photography by René Kemps



**Feelgood** designs

**Dimensions (mm):** W520 x D550 x H760 (SH 450)

**Materials:** powder coated frame with split or pulut rattan PU finished shell or polyethylene shell

**Colours:**

black frame with split rattan natural  
black frame with split rattan charcoal  
black or white frame with rattan pulut natural  
black frame with rattan pulut dark grey (not pictured)

black or white frame with polyethylene wheat (outdoor)  
black frame with polyethylene black (outdoor)

**Outdoor use:** polyethylene version

**Stacking:** stackable up to 4 units



**C603** by Yuzuru Yamakawa (1958)



C603 stool black frame/split rattan charcoal shell

photography by fotostudio.be



**Feelgood** designs

**Dimensions (mm):** W520 x D480 x H940 (SH 660)  
or W510 x D480 x H1000 (SH 750)

**Materials:** powder coated frame with split or pulut rattan PU finished shell or polyethylene shell

**Colours:**

black frame with split rattan natural  
black frame with split rattan charcoal  
black frame with rattan pulut natural  
black frame with rattan pulut dark grey

black frame with polyethylene wheat (outdoor)  
black frame with polyethylene black (outdoor)

**Outdoor use:** polyethylene version

**Stacking:** no



**C603 STOOL** by Yuzuru Yamakawa (1958)



C607 chair black frame/split rattan maroon shell

photography by PSGstudio.be

**Feelgood** designs



**Dimensions (mm):** W520 x D535 x H805 (SH 440)

**Materials:** powder coated frame with split rattan PU finished shell

**Colours:**

black frame with split rattan natural  
black frame with split rattan charcoal  
black frame with split rattan maroon

**Stacking:** stackable up to 6 units



**C607** by Yuzuru Yamakawa (1964)

C607 stool black frame/split rattan natural shell

photography by fotostudio.be



**Feelgood** designs

**Dimensions (mm):** W510 x D460 x H880 (SH 660) or  
W510 x D460 x H970 (SH 750)

**Materials:** powder coated frame with split rattan PU finished shell

**Colours:**

black frame with split rattan natural  
black frame with split rattan charcoal  
black frame with split rattan maroon

**Stacking:** no



**C607 STOOL** by Yuzuru Yamakawa (1964)



Kaki chair charcoal frame/polyethylene wheat shell, Urban table XL & marta; outdoor cushions  
photography by PSGstudio.be



**Dimensions (mm):** W590 x D530 x H770 (SH 450)

---

**Materials:** powder coated frame with rattan slimit PU finished shell or polyethylene shell

---

**Colours:**  
charcoal frame with rattan slimit natural  
charcoal frame with rattan slimit graphite  
charcoal frame with rattan slimit rust  
charcoal frame with polyethylene wheat (outdoor)  
charcoal frame with polyethylene charcoal (outdoor)

---

**Outdoor use:** polyethylene version

---

**Stacking:** stackable up to 4 units



KAKI CHAIR by Jamie McLellan (2018)



Kakī armchair & Kakī chair charcoal frame/slimit rattan natural shell  
photography by PSGstudio.be

Feelgood designs



**Dimensions (mm):** W640 x D540 x H770 (SH 450)

**Materials:** powder coated frame with rattan slimit PU finished shell or polyethylene shell

**Colours:**  
charcoal frame with rattan slimit natural  
charcoal frame with rattan slimit graphite  
charcoal frame with rattan slimit rust  
charcoal frame with polyethylene wheat (outdoor)  
charcoal frame with polyethylene charcoal (outdoor)

**Outdoor use:** polyethylene version

**Stacking:** stackable up to 4 units



KAKĪ ARMCHAIR by Jamie McLellan (2018)

Kaki stool charcoal frame/slimit rattan natural shell  
@connors\_and\_co & @francoisebaudet

Feelgood designs



**Dimensions (mm):** W590 x D500 x H850 (SH 640)

**Materials:** powder coated frame with rattan slimit PU finished shell or polyethylene shell

**Colours:**  
charcoal frame with rattan slimit natural  
charcoal frame with rattan slimit graphite  
charcoal frame with rattan slimit rust\*  
charcoal frame with polyethylene wheat\* (outdoor)  
charcoal frame with polyethylene charcoal\* (outdoor)  
\*on request

**Outdoor use:** polyethylene version

**Stacking:** no



KAKI STOOL WITH BACKREST by Jamie McLellan (2018)



Kakī low stool charcoal frame/slimit rattan natural shell  
photography The Fresh Light



Feelgood designs



**Dimensions (mm):** W490 x D400 x H450 (SH 450)

**Materials:** powder coated frame with rattan slimit PU finished shell or polyethylene shell

**Colours:**  
charcoal frame with rattan slimit natural  
charcoal frame with rattan slimit graphite  
charcoal frame with rattan slimit rust\*  
charcoal frame with polyethylene wheat (outdoor)  
charcoal frame with polyethylene charcoal (outdoor)  
\*on request

**Outdoor use:** polyethylene version

**Stacking:** stackable up to 2 units



KAKĪ LOW STOOL by Jamie McLellan (2018)



Kaki lounge chair /polyethylene charcoal shell (outdoor) & marta; seat cushion  
photography by PSGstudio.be



Feelgood designs

**Dimensions (mm):** W670 x D640 x H170 (SH 400)

**Materials:** powder coated frame with rattan slimit PU finished shell or polyethylene shell

**Colours:**  
charcoal frame with rattan slimit natural  
charcoal frame with rattan slimit graphite  
charcoal frame with rattan slimit rust  
charcoal frame with polyethylene wheat (outdoor)  
charcoal frame with polyethylene charcoal (outdoor)

**Outdoor use:** polyethylene version

**Stacking:** stackable up to 4 units



KAKI LOUNGE CHAIR by Jamie McLellan (2018)



C317 lounge chair black frame/polyethylene wheat shell

photography by PSGstudio.be



**Feelgood** designs

**Dimensions (mm):** W825 x D760 x H760 (SH 405)

**Materials:** powder coated frame with split rattan PU finished shell or polyethylene shell

**Colours:**

black or white frame with split rattan natural  
black frame with split rattan charcoal

black or white frame with polyethylene wheat (outdoor)  
black frame with polyethylene black (outdoor)

**Outdoor use:** polyethylene version



**C317** by Yuzuru Yamakawa (1965)





**Dimensions (mm):** W750 x D750 x H920;  
ottoman: W640 x D570 x H530 (SH 380)

---

**Materials:** rattan pole PU finished

---

**Colours:** natural or black

---

**Outdoor use:** no



C110 HIGHBACK by Yuzuru Yamakawa (1964)



CL320 Easy Chair black rattan pole  
photography by gafas.be | styling by sophiepillen.be

Feelgood designs



**Dimensions (mm):** W850 x D760 x H710 (SH 360)

---

**Materials:** rattan pole PU finished

---

**Colours:** natural or black

---

**Outdoor use:** no



CL320 EASY CHAIR by Yuzuru Yamakawa

Snug slimit rattan natural rattan  
photography by gafas.be | styling by sophiepillen.be



Feelgood designs

**Dimensions (mm):** W1040 x D890 x H850 (SH 315)

**Materials:** steel frame with slimit rattan PU finished shell

**Colours:** slimit rattan natural or dark grey

**Outdoor use:** no



SNUG by Dennis Abalos (2011)



Manta lounge chair black polyethylene/dark grey seat

photography by gafas.be | styling sophiepillen.be



**Feelgood** designs

**Dimensions (mm):** W980 x D890 x H835 (SH 380)

**Materials:** steel frame with split rattan PU finished shell or polyethylene shell and upholstered seat

**Colours:**

split rattan natural with beige seat

split rattan charcoal with black seat

black polyethylene with dark grey seat (outdoor)

**Outdoor use:** polyethylene version



**MANTA** by Henrik Pedersen (2011)

Tornaux lounge & footstool black frame/rattan peel natural  
photography by PSGstudio.be



**Dimensions (mm):** W860 x D900 x H1004 (SH 360)  
Footstool: W600 x D470 x H410 (SH 360)

**Materials:** powder coated frame with rattan peel PU finished shell or polyethylene shell

**Colours:**

black frame with rattan peel natural  
black frame with rattan peel espresso

black frame with polyethylene espresso outdoor

**Outdoor use:** polyethylene version



**TORNAUX & FOOTSTOOL** by Henrik Pedersen (2011)

**Feelgood** designs



Clara bench charcoal frame/slimit rattan natural shell

photography by PSGstudio.be



**Feelgood** designs



**Dimensions (mm):** W1330 x D640 x H800 (SH 450)

**Materials:** powder coated frame with rattan slimit PU finished shell

**Colours:**  
charcoal frame with rattan slimit natural  
charcoal frame with rattan slimit graphite

**Outdoor use:** no

**Stacking:** no



**CLARA** by Allan Nøddebo (2018)

Chameleon chair natural & Trestle table black top, black legs  
photography by The Fresh Light



Feelgood designs

- Dimensions (mm):** W552 x D520 x H800 (SH 450)
- Materials:** american oak frame with laminated american oak veneer seat and back, 2 pack waterbased finish
- Colours:** natural or black
- Outdoor use:** no
- Stacking:** no



CHAMELEON CHAIR by Allan Nøddebo (2019)



Peggy chair black & Trestle table black top/black feet  
photography by fotostudio.be

**Feelgood** designs



**Dimensions (mm):** W460 x D506 x H793 (SH 450)

**Materials:** american oak frame with laminated american oak veneer  
seat and back, 2 pack waterbased finish

**Colours:** natural or black

**Outdoor use:** no



**PEGGY CHAIR** by Isabel Ahm (2015)

Valby chair black oak & Trestle table black top, black legs  
photography by The Fresh Light & Different we are

Feelgood designs



**Dimensions (mm):** W541 x D536 x H789 (SH 450)

**Materials:** american oak frame with laminated american oak veneer seat and back, 2 pack waterbased finish

**Colours:** natural or black

**Outdoor use:** no



VALBY CHAIR by Allan Nøddebo (2015)



Inge table black & Ellie chair charcoal frame/slimit rattan natural sehl  
photography by PSGstudio.be



**Dimensions (mm):** diameter 1200 x H750 (base diameter 470)

**Materials:** American oak veneer with two pack water based finish

**Colours:** natural or black

**Outdoor use:** no

**Stacking:** no



INGE TABLE by Allan Nøddebo (2019)

**Feelgood** designs

Trestle Table black top/natural feet & C603 chairs black frame/split rattan natural shell

photography by gafas.be | styling by sophiepillen.be



**Feelgood** designs

**Dimensions (mm):**

D1800 x W900 x H730

D2100 x W950 x H730

D2400 x W1000 x H730

**Materials:** american oak frame and american oak veneer top (reinforced with steel), 2 pack waterbased finish

**Colours:** top and legs natural or black

**Outdoor use:** no



**TRESTLE TABLE** by Allan Nøddebo (2012)



Urban loom chair natural  
Tahini Melbourne (Australia) by Zwei Projects  
photography by Michael Kai



Feelgood designs

**Dimensions (mm):** W497 x D530 x H750 (SH 450)

**Materials:** unfinished teak frame with loom woven PU finished seat

**Colours:** natural or charcoal

**Outdoor use:** no

**Stacking:** no



URBAN LOOM CHAIR by Jakob Berg (2005)

Urban chairs at Urban table S  
photography by PSGstudio.be



- Dimensions (mm):** W497 x D530 x H750 (SH450)
- Materials:** teak unfinished
- Colours:** natural (unfinished)
- Outdoor use:** yes
- Stacking:** stackable up to 4 units

Feelgood designs



URBAN CHAIR by Jakob Berg (2005)



Two Urban tables M+L & C603 chair white frame/PE wheat shell  
photography by PSGstudio.be



Dimensions (mm):

- XS: W695 x D695 x H740
- S: W1400 x D800 x H740
- M: W1800 x D900 x H740
- L: W2100 x D900 x H740
- XL: W2600 x D100 x H740

Materials: teak unfinished

Colours: natural (unfinished)

Outdoor use: yes

Table comes flat packed



URBAN TABLE by Jakob Berg (2005)



## SEAT CUSHIONS

tailor made indoor and outdoor seat cushions for Basket chair • C603 chair & stool • Ellie chair • C607 chair & stool • C317 lounge chair • Kaki chair & armchair, stool & lounge chair • Clara bench • Edwin chair, stacking chair & lounge chair

### OUTDOOR

Sunbrella® textiles are water-repellent and resistant to fading and degradation from sunlight.  
with quick dry filling • bottom anti-slip and zipper • washable

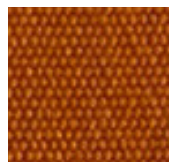
#### Solids



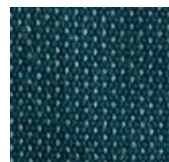
Lichen



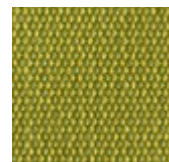
Blush



Tuscany

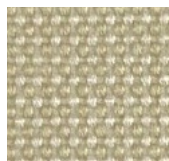


Adriatic



Lime

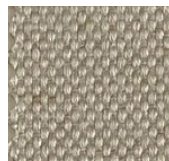
#### Naté



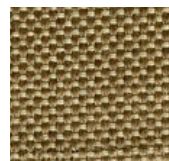
Nature



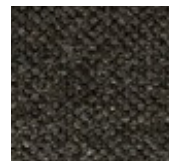
Grey chiné



Linen chalk



Heather beige



Sooty

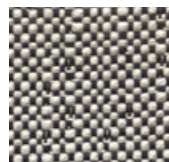
#### Savane



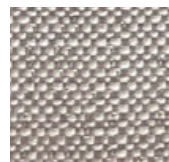
Canvas



Storm



Granit

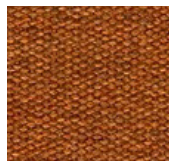


Silver

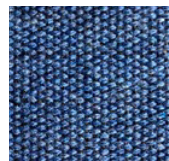
#### Heritage (50% recycled)



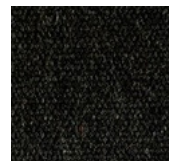
Ash



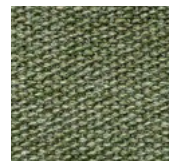
Pumpkin



Denim



Char

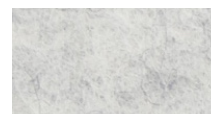


Leaf

### INDOOR

100% wool felt

two layers with filling • bottom standard anthracite anti-slip • top do be chosen



06 marble



51 powder



18 dark blue



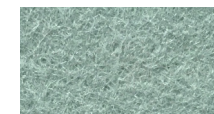
20 mango



07 light grey mixture



29 walnut



50 aqua



11 red



01 anthracite



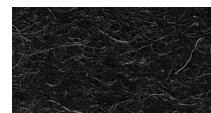
66 iron



39 deep water



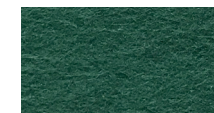
70 spice



08 graphite



96 mustard



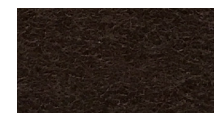
49 jade



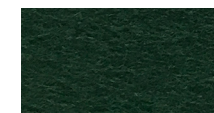
26 aubergine



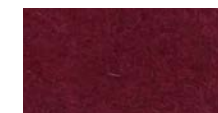
02 black



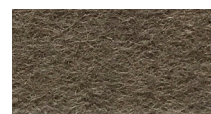
27 chocolate



44 fir green



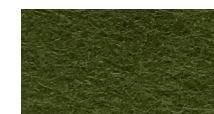
21 burgundy



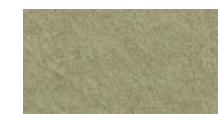
35 taupe



12 indigo



24 olive



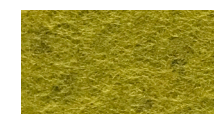
48 pistachio



38 caramel



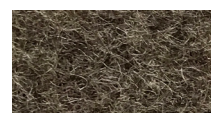
34 petrol



71 moss



23 curry



47 pepper



10 blue



30 may green





**marta;**

marta b.v. - import & agency  
contact: [info@martaonline.eu](mailto:info@martaonline.eu)  
[www.martaonline.eu](http://www.martaonline.eu)  
+32 475 294 023 or +31 6 430 30 426